

# User manual

## *Medical bath trolley - Neptun*

- *Model 130-00108-00*



# Table of content

<b>1.</b>	<b>Introduction – bath trolley Neptun.....</b>	<b>3</b>
<b>2.</b>	<b>Unpacking.....</b>	<b>3</b>
<b>3.</b>	<b>Important – Before use .....</b>	<b>3</b>
<b>4.</b>	<b>Product classification and key data .....</b>	<b>4</b>
<b>5.</b>	<b>Function and use .....</b>	<b>5</b>
5.1	Areas of use.....	5
5.2	Wheels and brake .....	6
5.3	Height adjustment .....	6
5.4	Charging the battery .....	6
<b>6.</b>	<b>Cleaning, disinfection and service .....</b>	<b>7</b>
6.1	Service .....	7
6.2	Dismantling and installation of outlets .....	8
6.3	Replacing the battery modules.....	9
<b>7.</b>	<b>Safety .....</b>	<b>9</b>
7.1	CE Deklaration.....	10
<b>8.</b>	<b>Technical specification.....</b>	<b>10</b>
8.1	Disposal and recycling .....	10
<b>9.</b>	<b>Warranty .....</b>	<b>10</b>

## 1. Introduction – bath trolley Neptun

Thank you for choosing Rini's bath trolley Neptun for neonatal care.

The bathing trolley is developed to offer the best possible comfort, ergonomics, strength, and practical design to meet the demands of daily work. Both patient and operator have been in focus in connection with the development

The bath trolley has battery-powered height adjustment, and the height range is large, approx. 500mm, to allow for an optimal ergonomic working position. The tub is made of plastic with a durable surface, the frame is made of stainless steel.

For best hygiene, the trolley has smooth surfaces to facilitate cleaning.

Rini is constantly developing our existing and new products. We always put the user at the center and value opinions and ideas that move our development forward. So don't hesitate to let us know what you think of our products.

## 2. Unpacking



**To ensure patient safety and the life span of the product it is important to observe the following instructions before use.**

Before you unpack check the packaging. Report any damage immediately to the transport company and your local Rini representative. Remove the product and take out any non-installed accessories that are packed separately



**Do not use sharp tools when removing the packaging material. This can cause damage.**

Make sure that the delivery includes all ordered parts. Contact your Rini sales representative if you find any discrepancies



**Be careful when lifting the product off the pallet. The product is heavy and may cause injury.**

**Before using the product, please check the following:**

- All cables are connected as described in this manual

**Please contact your local Rini sales representative if you have any concerns.**

## 3. Important – Before use

When you receive the bath trolley, everything is assembled and ready to use.

All electrical connections are complete and since the bath trolley is intended for battery operation, all that remains is to check that all cables are properly connected, and that the battery is charged.



**Please read this user manual carefully and familiarize yourself with how the product should be used before putting it into use.**

## 4. Product classification and key data



The product is designed for use in hospitals, specialist clinics or similar care environments by professional staff. The product's risk class in accordance with MDR 2017/745 Annex VIII is "Class 1". Previous generations and similar products are also within risk class "Class 1". The product's device class according to the US FDA is "Class 1" and exempt from premarket notification 510(k) requirements.

The product is traceable via serial number and Rini has a "Post-market surveillance" system integrated within its quality system that is certified according to ISO13485 for medical devices. Any incidents are reported to the relevant authorities in accordance with applicable laws.

The product has been tested against applicable standards in terms of "General safety and performance requirements", "Demonstration of conformity" and is covered by a "Risk Management" process in accordance with ISO14971.

Technical specification can be found in a separate chapter in this manual. Information about the manufacturer and where and when the product was manufactured appears on the type plate below. For questions about this product, specify the UDI and SN for identification.



Label Description	
	Warning. Risk is present. Read the applicable information in the user manual.
	Type B product with protection against electric shock.
SWL	Safe Work Load. The product must not be loaded with more than the specified weight.
IPX4	The product is protected from splash of water.
Duty cycle	Average ratio between operating time and idle time of the electrical lifting mechanism.

## 5. Function and use



- |                             |                          |
|-----------------------------|--------------------------|
| 1. Four lockable wheels     | 5. Handles & towel rails |
| 2. Control box with battery | 6. Hand control          |
| 3. Lifting column           | 7. Outlet with tap       |
| 4. Bathtub                  |                          |

### 5.1 Areas of use

The bath trolley Neptun has been developed to facilitate the daily work of staff in neonatal care. The trolley is raised and lowered using an electrically controlled telescopic column where positions from lowest to highest height allow a good ergonomic working position for the operator. Height adjustment takes place via corded hand control, which is advantageously hung on the driving handle to be easily accessible. Battery charger is included, and the batteries cannot be overcharged.

Thanks to the placement of Rini's flat lifting column on one end of the bath trolley, the trolley can be placed in many clinics with the tub over a sink or washing machine when filling and emptying. If the interior does not allow this option and the bath trolley must be placed to the side, a hose with a spigot can be used when emptying the tub. The wheelbase with the placement of the four wheels also ensures that the cart stands firmly.

## 5.2 Wheels and brake



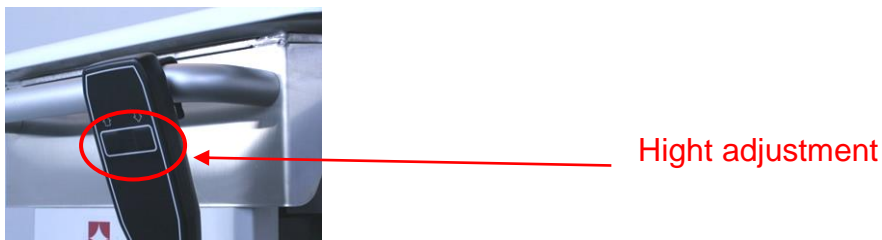
The product has four easy-rolling wheels, which are lockable. The wheels are braked by pressing down on the wheel's locking lever with your foot. The brake is released by pulling up the wheel lock lever.



**It is important that the wheels of the bath trolley are kept locked when in use. Improper use can cause personal injury. The bathing trolley must not be used for passenger transport.**

## 5.3 Height adjustment

The lifting device is a battery-powered motor, which consists of motor, control unit and battery. The height is regulated using a hand control.



Maneuvering takes place by pressing the buttons on the hand control, see picture. Press the right button to raise the tub and the left button to lower it. If both buttons are pressed at the same time, no adjustment takes place.



**The bathing trolley must not be loaded with more than 20 kg.**

## 5.4 Charging the battery

A fully charged battery can be used for approximately five days under normal working conditions. The battery charger is equipped with overcharge protection and automatically switches to maintenance charging when full battery capacity is reached, which takes about 12 hours. The charging socket is on the hand control.



**Only use the supplied charger from Rini.**

Batteries have a limited lifespan and must be replaced after approximately four years of use under normal operating conditions. For optimal performance, the battery should be charged weekly and at least every three months to avoid damage caused by self-discharge.

## 6. Cleaning, disinfection and service

Only the bathtub counts as surfaces close to the patient. General cleaning should be done as needed and exposed parts should be cleaned after each use. It is important to follow the hospital/clinic's cleaning regulations and routines.

Part	Product	Information
<b>Bathtub chassis and wheels</b>	Disinfectants according to hospital's recommendation	Disinfectants containing alcohol can be used
<b>Control panel</b>	Noedischer Dekonta CCOTRADE RW	1-3% concentration 0,5% concentration

Part	Product	Information
<b>Bathtub</b>	Water and soap	Use damp cloth
<b>Chassis and wheels</b>	Water and soap	Use damp cloth
<b>Battery charger</b>	Water	Use damp cloth

### 6.1 Service

An annual review of functions is recommended to maintain operational and personal safety. Contact your Rini dealer regarding service that includes:

- Checking and adjusting moving mechanical parts and accessories
- Inspection of bathtubs
- Control of electrical equipment, battery, and battery charger

Del	Information
<b>Battery</b>	Batteries should be charged at least once a month to maintain capacity
<b>Bathtub</b>	The bathtub should be replaced every 4 years or immediately if scratched or damaged

The product may only be repaired by Rini or by a Rini-approved service center. Product under warranty must be sent to Rini or a service center approved by Rini.



**Unauthorized repairs and modifications may result in malfunction and void warranty.**



## 6.2 Dismantling and installation of outlets



Hold the hose and slightly loosen the black knob. Then release the hose clamp with a screwdriver to release the hose.



Hold against the outlet when the hose is detached. Remove the locking knob and the black rubber gasket.



Then lift out the outlet and loosen the plug and check the o-ring. Installation of drains with new parts is done in reverse order.



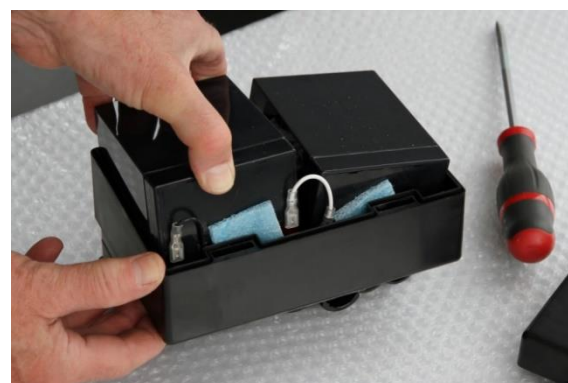
### 6.3 Replacing the battery modules

The batteries are in the control unit which is mounted on the underside of the bathing trolley. To replace batteries:

1. Unplug the cable connectors
2. Carefully place the cart on its side
3. Unscrew 4 screws holding the box



**Be careful when turning the cart, the cart is heavy and can cause personal injury. Avoid bumping the cart. This may cause material damage.**



Use a small screwdriver to open the cover of the control box. Remove the batteries and unplug the connectors. Insert new batteries and reconnect them accordingly.

Re-install the control box and cables.

Batteries have a limited lifecycle and must be replaced after approximately four years of use under normal operating conditions. For optimum performance, the battery should be charged weekly and must be charged at least every third month to avoid damage from self-discharge.



**Used batteries must be recycled in the same way as car batteries.**

## 7. Safety

The product should only be used as intended otherwise it can cause injury to persons or product. Necessary knowledge of the product is required before clinical use and this manual should always be available when using the product. No accessories other than those mentioned in this manual may be used. Please note the warning signs on the product.



**Warning signs are used when there is a risk for patients, staff or product.**

## 7.1 CE Deklaration



**Bath trolley 130-00108-00 follows EU Medical Device Regulation 2017/745 for medical products.**

**Tested according to IEC 60601-1**

## 8. Technical specification

General	
Weight	25kg
Bathtub L X W	460 x 700mm
Medical classification	Class 1 Type B
Standard	EN/IEC 60601
Protective class	IPX4
Battery	24V 2,9Ah rechargeable lead acid
Charger	100 - 240V
Operator data	
Lifting capacity	20kg
Height adjustment	850 - 1220mm – with push button
Operational environment	
Temperature	+5°C to +40°C
Relative humidity	20% to 90% at 30°C
Atmospheric pressure	700 to 1060hPa
Transport and storage	
Temperature	-10°C to +50°C
Relative humidity	20% to 90% at 30°C
Atmospheric pressure	700 to 1060hPa

### 8.1 Disposal and recycling

The product is mainly made from environmentally recyclable materials as steel, stainless steel, aluminum, and plastics. Rini recommends that the material be sorted and recycled in connection with the destruction of the product.



**Electronic parts and cables shall be handled as electronic waste in accordance with local requirements. The battery contains lead and is disposed according to current environmental legislation.**

## 9. Warranty

The warranty is valid one year from the date of purchase. Please contact Rini for further information.



Rini Ergoteknik AB Fågelsångsvägen 3B  
SE-186 42 Vallentuna Sweden  
Phone +46 8 594 77170  
Email [info@rini.se](mailto:info@rini.se) [www.rinicompany.com](http://www.rinicompany.com)

